

Steeline BONVILLE CLADDING WALL PANEL

CLASSIC EURO PANEL RANGE
WALL CLADDING

Bonville is a modern sleek looking cladding with secret concealed fixings, square edges and 15mm expressed groove providing straight lines used in vertical or horizontal orientations.

Being designed for use in wall and ceiling applications, it can be used in a variety of situations. Bonville cladding can be attached directly to wall frames or with the use of battens over other structures.

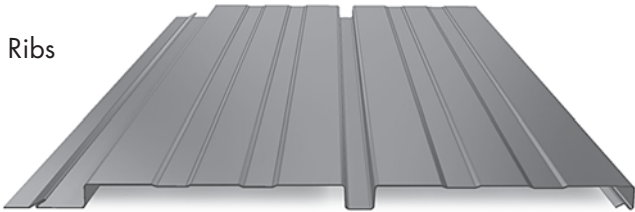
A breathable vapour barrier is required between the structure and wall cladding in residential applications.

Profiles

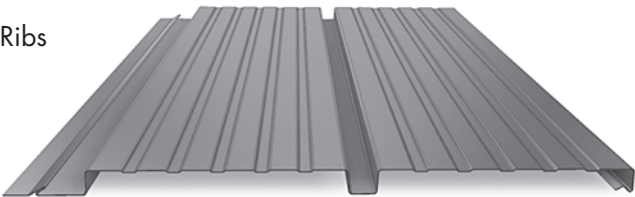
Flat



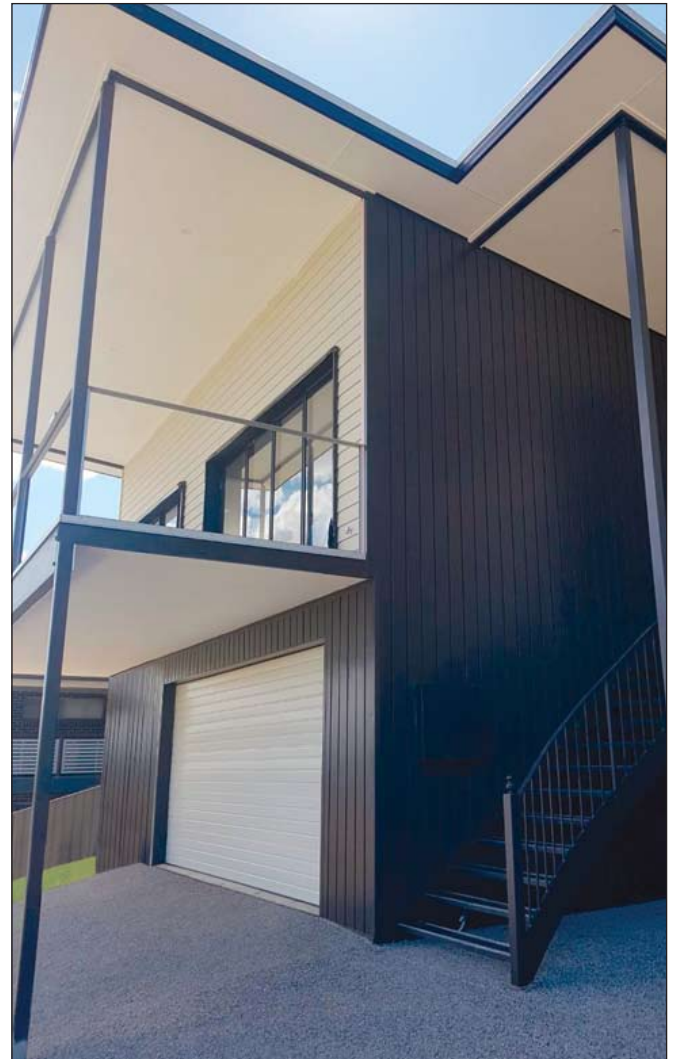
2 Ribs



5 Ribs



Joint Detail



Colorbond®

Ph. 1300 STEELINE

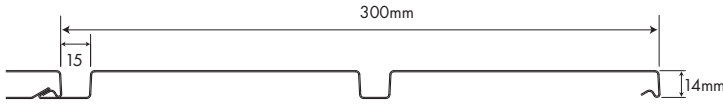
steeline.com.au

Steeline

Service over and above

Steeline BONVILLE CLADDING WALL PANEL

CLASSIC EURO PANEL RANGE WALL CLADDING



Profiles

There are 3 profiles:
Flat, 2 Ribs and 5 Ribs.

Usage

Walls & under eaves only.

Preparation

The battens must be rigid and in one plane at 1500mm centres max.

Thickness

.55mm Colorbond®

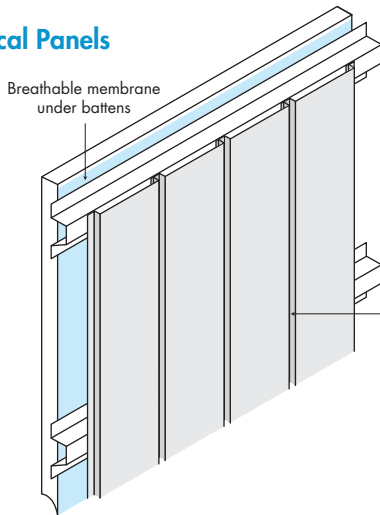
Availability

- Colorbond®
- Colorbond® Ultra
- Colorbond® Metallic
- Colorbond® Matt
- Zinalume AZ150

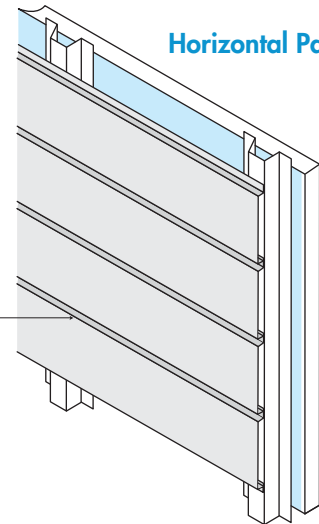
Standard Specifications

Panel Depth and Cover	- 14mm x 300mm
Express Joint Width	- 15mm
Panel Length	- 0.5m - 8.0m
Minimum Pitch	- Wall & ceiling applications only
Batten Span	- Maximum 1500mm Centres
Screws	- Timber - TY17 12 x 25 Hex Type - Steel - Teks M10 x 16 Hex Type

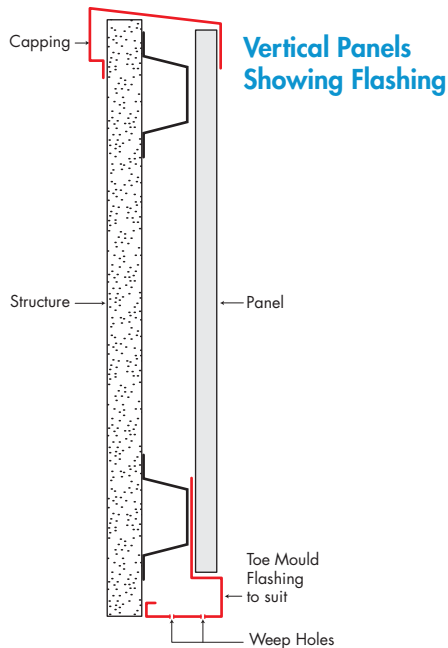
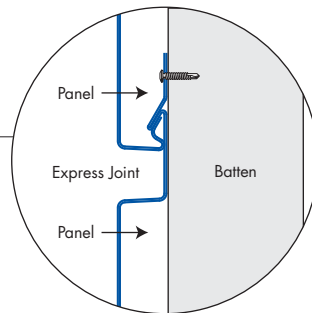
Vertical Panels



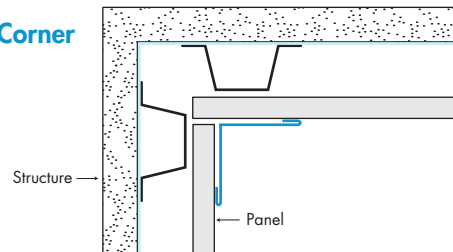
Horizontal Panels



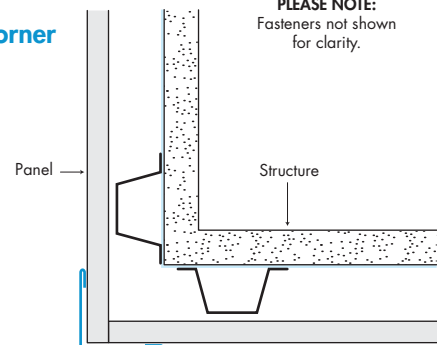
Express Joint



Internal Corner



External Corner



OIL CANNING

Oil Canning is a characteristic that is inherent in thin gauge metals. Internal stresses, expansion and contraction can cause a wavy surface on flat panels. The Architect and Builder need to be aware of the aesthetic effect that oil canning can have on the project. Recommendations to reduce the effect of oil canning can be found on the steeline.com.au web site.

Colorbond®

Steeline