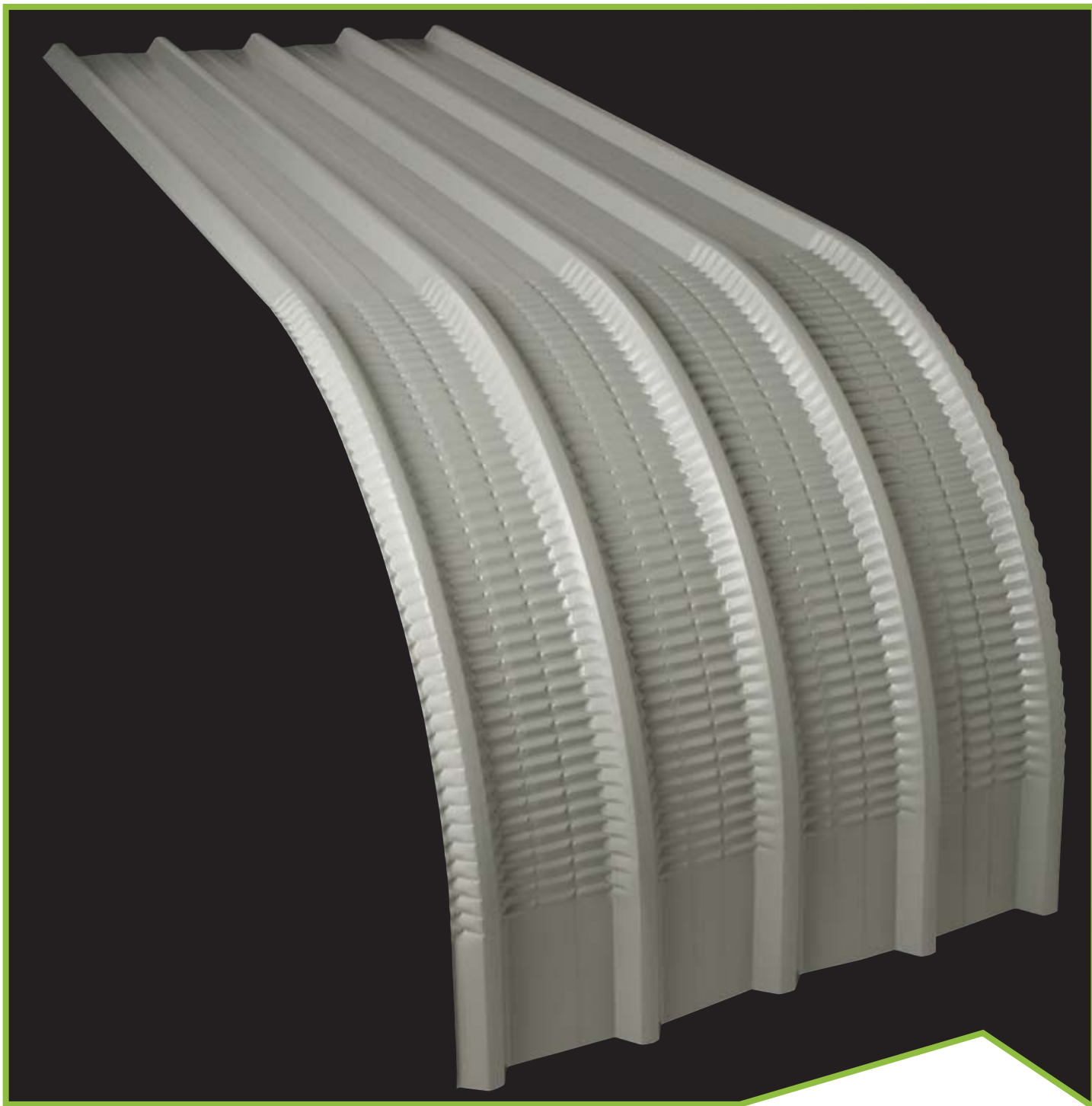


# Steeline Steel Clad Crimp Curve

Crimp Curve 0.42 BMT AZ150 G550

ST27



**Colorbond® Zinalume®**

Steeline Crimp Curve is an ideal product to give your commercial building an innovative look. It can eliminate the use of gutters, giving a smooth line and aesthetically pleasing appearance at the height of the walls. Made from quality COLORBOND® or ZINCALUME® steel, Steeline Crimp Curve is strong and long lasting.



**Ph. 1300 STEELINE**

**[www.steeline.com.au](http://www.steeline.com.au)**

**Service over and above**

## Method of laying steel-clad crimp curve

Lay the first line of sheeting at the end of the building away from the prevailing weather. Fix the lowest sheet first and work up to the ridge overlapping as you go. The sheeting is to be positioned with its leading edge a suitable distance inside the edge of the building, maintaining this dimension along the full length of the building edge so that it is exactly aligned and square with the building frame. Lay subsequent sheets in a similar manner overlapping as you go and taking care to match the curved areas to each other, locating adjacent crimps accurately and fixing the side laps tight together before the main fasteners are added.

Because of the rigidity imparted to the crimp curve bends, the curved areas are the critical fixing areas and only minimal re-alignment can be made in these areas. It is therefore necessary to keep the alignment correct on every sheet as it is laid.

On occasions where two (2) or more datum points occur on one elevation, fixing should commence by working away from these points as previously described, and if necessary, at a convenient position, a slip flashing may be introduced to provide any required adjustment.

## Side lap fasteners

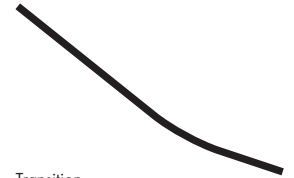
These are added at the midspans of the sheets for support spacings over 900mm for roofs and 1200mm for walls to give weather proofing. On the bends, sufficient side lap fasteners are to be added to ensure absolute weather tightness. Use No 8x12 hex head type S self drilling screw with neo washer or blind rivet.

**NOTE: Minimum recommended radius to crimp 550mm**

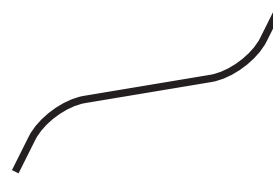
## Curve Designs



Bull nose



Transition



Reverse curve



180 Barrel vault



Cranked ridge



Old gothic



Double curve



Concave



Cranked double curve



Convex



Awning

Steeline has over 40 locations operating in every state and territory

