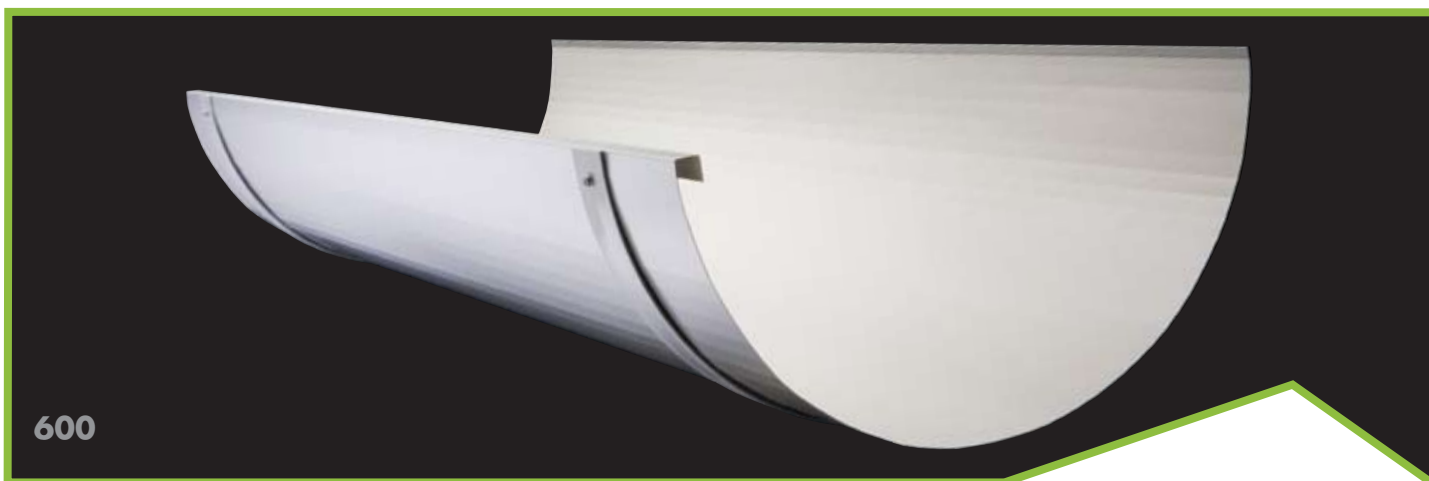
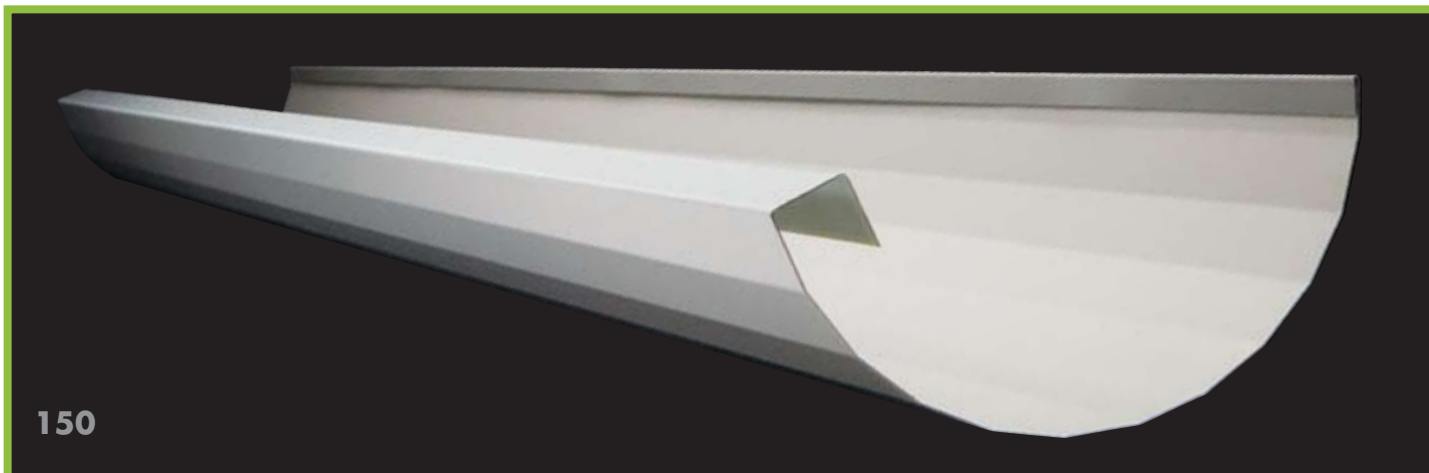


Steeline Half Round Gutters

Half Round 150/400/600

ST22



Colorbond® Zinalume®

Steeline Half Round Gutters are designed to be used in applications for standard domestic housing and for any commercial buildings that need to catch & carry large volumes of rain water. Steeline Half Round Gutters are made from quality COLORBOND® or ZINCALUME® steel, so they're strong and long lasting.



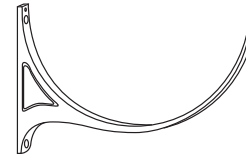
Ph. 1300 STEELINE

www.steeline.com.au

Service over and above

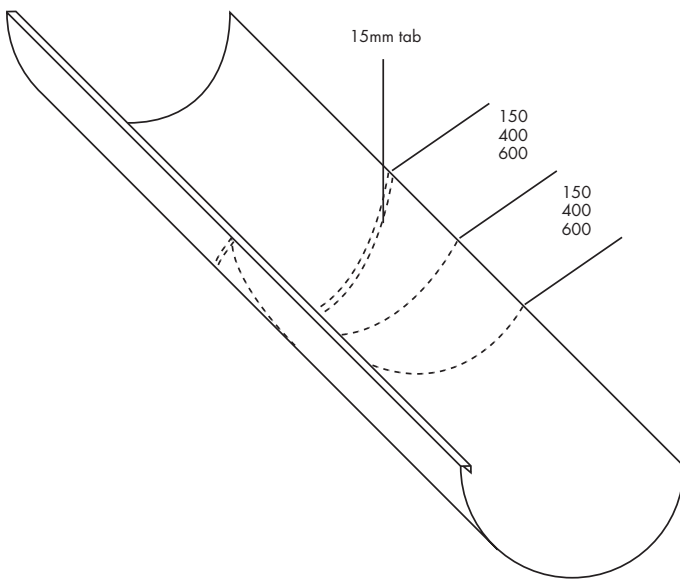
Fixing Instructions

1. Fit one external bracket at each end of the run of gutter
2. Connect string line to each of these brackets, pull line tight to avoid any sag and tie off.
3. Fit external brackets at maximum spacing of 1200mm
4. Lift gutter into the bracket and fasten with a screw through the top of the gutter and the bracket.

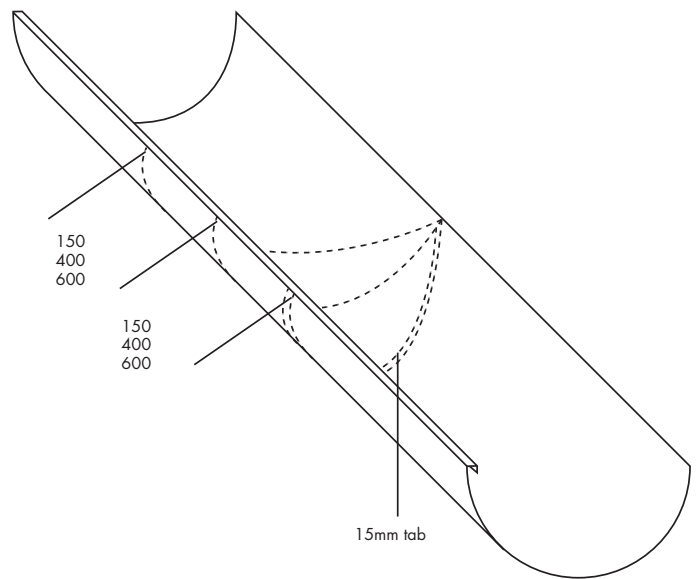


External bracket

EXTERNAL



INTERNAL



Making 90° corners simply cut out as per diagram according to the size of gutter you are using. Allow a 15 mm tab on one side to all to fit inside the other to join rivet and sea;

Steeline has over 40 locations operating in every state and territory

