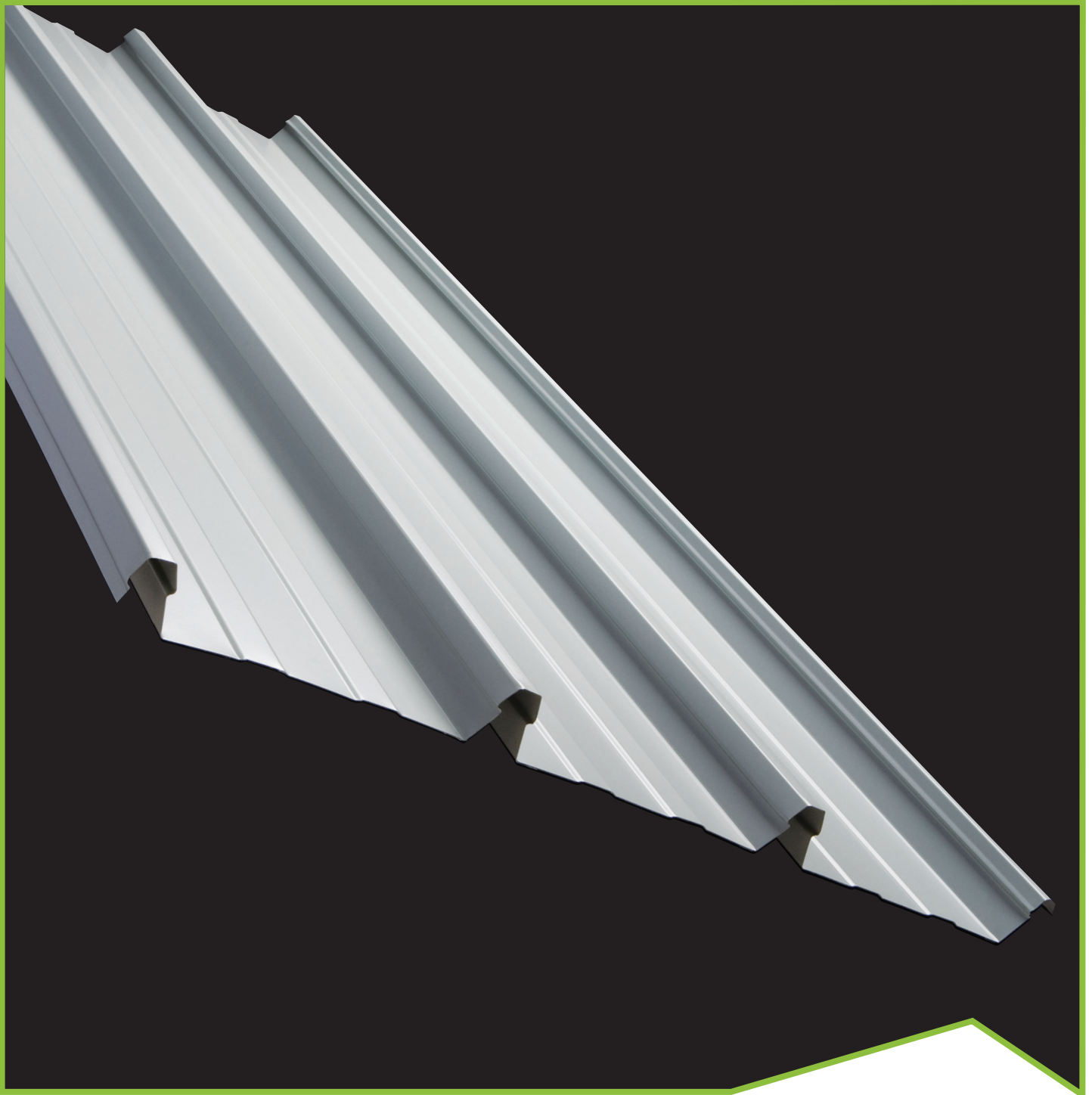


Steeline LOKDEK 680

Concealed Fixed Roof or Wall Cladding

ST35



Colorbond® Zinalume®

Steeline LOKDEK 680 is produced in 2 thicknesses and in long lengths suitable for roof and wall cladding applications. Each sheet has a 680mm cover width, and is designed to lock down over concealed fixing clips. Made from quality COLORBOND® or ZINCALUME® steel, Steeline LOKDEK 680 is strong and long lasting.



Ph. 1300 STEELINE

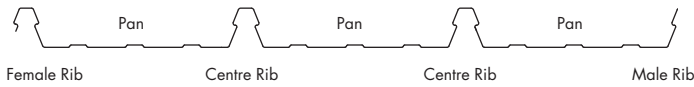
www.steeline.com.au

Service over and above

Installation

Method

The profile of Steeline LOKDEK 680 consists of 4 ribs connected by 3 intermediate pans.



Preparation

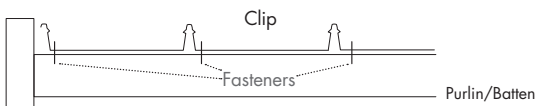
Ensure that the tops of the purlins or battens are all in the one plane by packing or easing between purlin and support. (Not between purlin and clip).

For roof pitches below 15°, turn the pans at the top of the sheets up at 90° using a turn-up tool. This prevents the entry of water which may be driven by wind beneath the flashing.

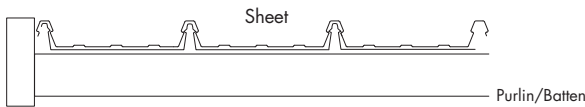
For roof pitches below 15°, turn the pans at the bottom ends of the sheets down at 30° to prevent water running back along the underside of the sheet.

Sheet Laying Sequence

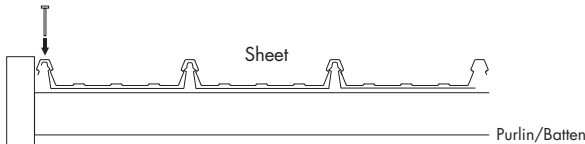
1. Ensure that the top face of all purlins or battens are laying in one plane. Fix the first line of clips, accurately aligning them so that the roof will be square to the gutter line. One clip is fitted to every support using the correct fasteners, with arrows pointing in the direct of laying. (minimum 3 fasteners per clip)



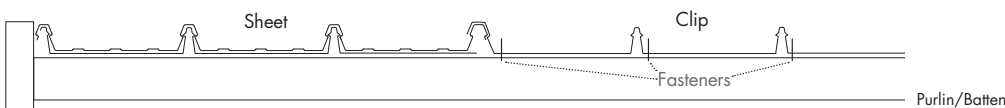
2. Lay the first sheet with the correct overhang each end. The female and centre ribs go onto the clips and must be snapped home by applying pressure with you foot.



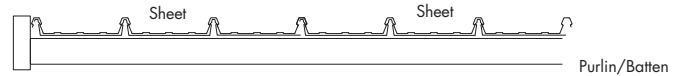
3. Use a 10x16 TEK to attach the overlap to the first fixing clip on the first sheet only



4. Fix the next run of clips, with the clip going over the underlapping rib.

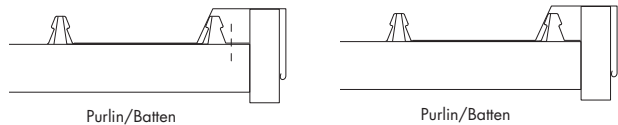


5. Lay sheet 2 with ends in line with sheet 1. The centre ribs go onto the long legs of the clips. The female rib goes onto the male rib of sheet 1 and must be engaged along the full length by walking along and pressing down with the foot until clips home. It is essential that the overlapping ribs are fully engaged.



6. Repeat steps 4 and 5 for the remaining roof area checking and adjusting for parallelism every 3-4 sheets. The female rib is fitted over the top of the male rib and securely clips into position. Specially designed clips are used to secure the Steeline LOKDEK sheeting down onto the supports. Each clip has 3 legs, one long and two short which correspond to the centre and female ribs of the Steeline LOKDEK sheeting. The short rib also clamps the male rib down. The whole deck is progressively clipped down in this manner.

7. At the end, if the remaining gap is less than half the sheet width, cut the last line of clips in two and use only the short leg to clamp down the final male rib.



If the gap is larger, use full clips as before and cut the male rib off the last sheet and clip down onto the clips. For the last sheet of Steeline LOKDEK, cut the end clip and fix over the edge of the last tray.

Recommended fasteners

For metal fixing of Steeline LOKDEK clips use a 10 x 16 hex head self drilling screw. 3 per clip. For timber fixing of LOKDEK clips use a 12 x 40 T17 hex head self drilling screw. 3 per clip. For pierce fixing of Steeline LOKDEK to either timber or metal refer to your local Steeline member.

Precautions

Wear soft soled shoes which cannot pick up shavings to ensure the protective coating is not damaged. Walk only in the pans of the sheets. Sheets should be laid in the opposite direction to the prevailing weather.

Coverage

Each sheet of Steeline LOKDEK has an effective coverage of 680mm + 2mm.

Roof Pitch

When the ribs of Steeline LOKDEK are snapped together an anti-capillary space is formed, preventing the entry of water. Because of the deep and widely spaced ribs, Steeline LODEK has very good water run-off capabilities, and can be used down to roof pitches as low as 1° (1 in 60).

NON-CYCLONIC

BASE MATERIAL THICKNESS	ROOF SPANS					WALL SPANS			
	SINGLE	END	INTERNAL	OVERHANG UNSTIFFENED	OVERHANG STIFFENED	SINGLE	END	INTERNAL	OVERHANG
0.42 (G550)	1100	1300	1400	200	600	2200	2200	2400	300
0.48 (G550)	1600	1900	2200	200	600	2300	2700	2700	400

Steeline has over 40 locations operating in every state and territory

