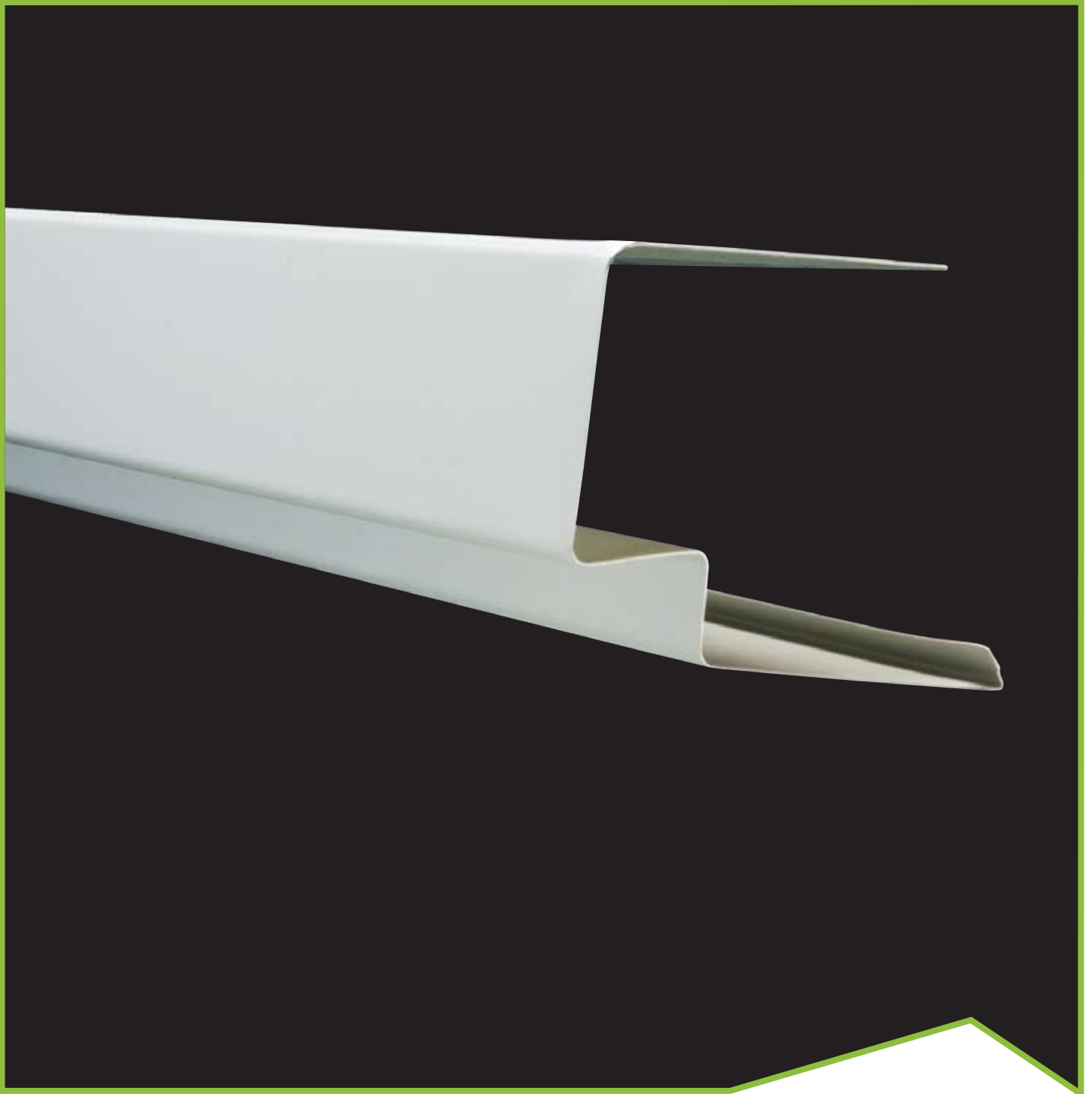


Steeline Dry Verge

Barge Soaker

ST06



Colorbond® Zinalume®

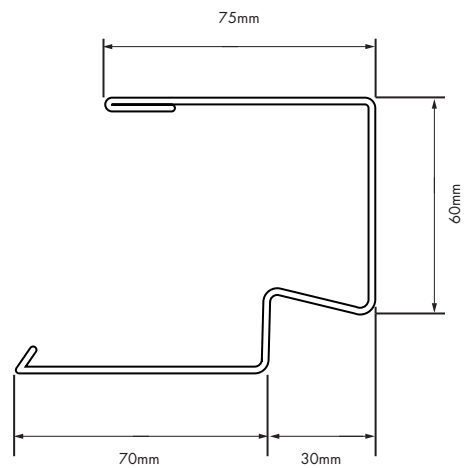
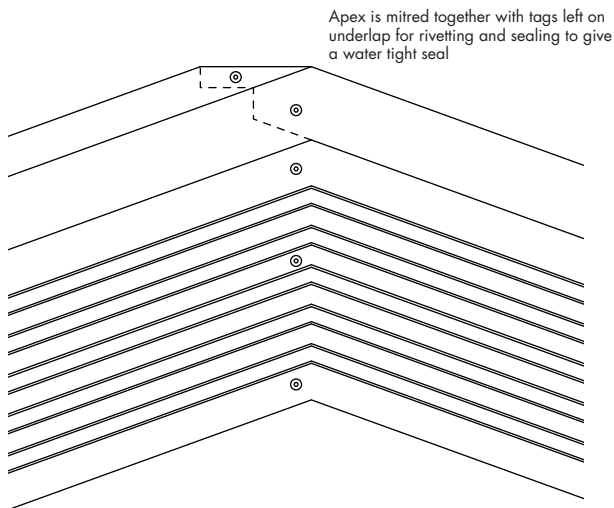
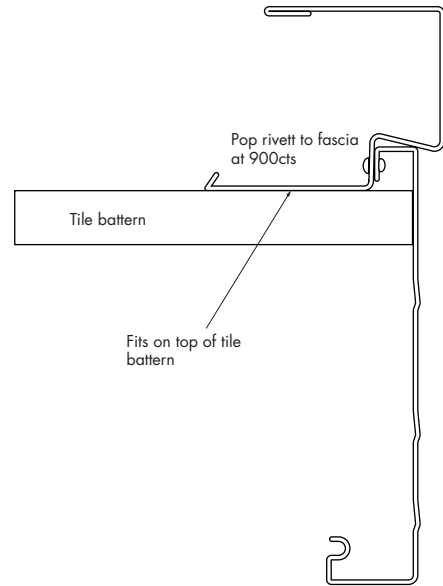
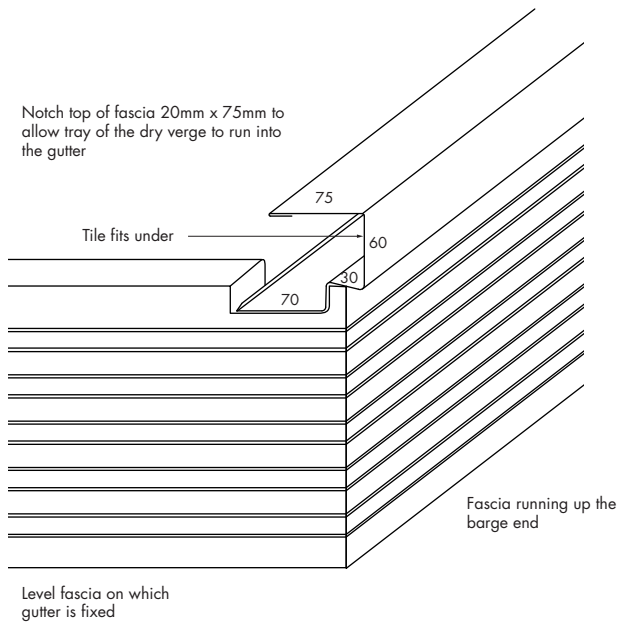
Steeline Dry Verge is a rollformed product that eliminates joints in Tile Barge Soakers on the gable ends of buildings with a tiled roof. With the use of the Steeline Dry Verge, there is no need for any cement pointing of tiles, as Steeline Dry Verge forms a small gutter under the tiles, which, flows into the back of the gutter at the bottom of the gable. Steeline Dry Verge is aesthetically pleasing, made from quality COLORBOND® or ZINCALUME® steel. It eliminates leaks at gable ends.



Ph. 1300 STEELINE

www.steeline.com.au

Service over and above



Steeline has over 40 locations operating in every state and territory

